



Kyle Magnetics CO.,LTD

Devotes ourselves in clean energy and preventing global-warming effect with our knowledge in magnetics!

Company Introduction

Kyle Magnetics established since 2006, located in Ningbo, China. We are a high-tech enterprise specialized in researching, developing and manufacturing a range of products like Alnico, NdFeB and SmCo magnets. Most of our products are exported to foreign markets. We also can do OEM&ODM designing according to customer's specific requirements, supporting your project from prototype to mature products.

With an annual output over 10,000 tons for domestic market, cooperating with thousands of trading company in China since 2006.

Now we cooperate with some famous companies in and abroad, such as BOSCH, Panasonic, SANYO, SIEMENS and WANDONG medical.

Our factory strictly implemented ISO9001 and TS16949 Quality Assurance System and continually strengthening the inner management for further development.

With many years' experience in manufacturing and SCM(supply chain management), we have obtained good reputation worldwide up to now. One of our subsidiaries factory zhonghang new materials technology become a publicly-traded company in 2018, better cash flow will help us to keep being responsible for our customers and shareholders like the past 12 years!

Contents

Pin Magnet



Hook magnet



Pot magnet



Rubber Coated Pot Magnet



Magnet Tool



Parts



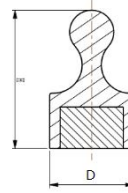
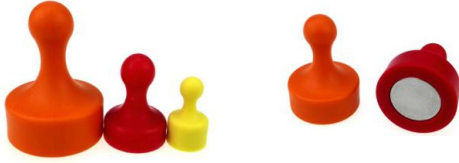
Handling Magnets



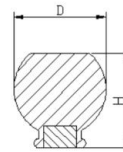
PRODUCTS STRUCTURE

[Pin Magnet \(NdFeB\)](#)

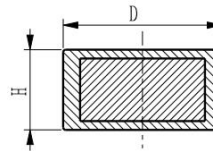
Pin Magnet (Rare earth materials), plastic house



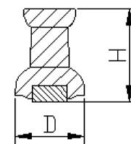
Model 型号	D	H	自重 Weight (g)	白板吸附A4纸张数 Hold A4 on white board	温度 Temperature (°C)
D12*20	12	20	3.5	18 pieces	<80
D19*25	19	25	7	24 pieces	<80
D29*38	29	38	22	30 pieces	<80



Model 型号	D	H	自重 Weight (g)	白板吸附A4纸张数 Hold A4 on white board	温度 Temperature (°C)
D25*25.4	25	25.4	8.8	18 pieces	<80



Model 型号	D	H	自重 Weight (g)	白板吸附A4纸张数 Hold A4 on white board	温度 Temperature (°C)
D12.7*6.35	12.7	6.35	4	11 pieces	<80

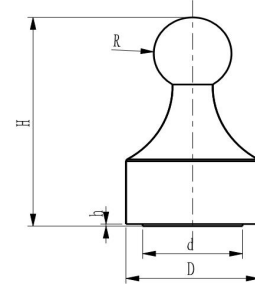


Model 型号	D	H	自重 Weight (g)	白板吸附A4纸张数 Hold A4 on white board	温度 Temperature (°C)
D10.8*14.5	10.8	14.5	1	11 pieces	<80

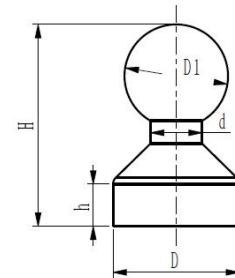
PRODUCTS STRUCTURE

[Pin Magnet \(NdFeB\)](#)

Pin Magnet (Rare earth materials), plastic house



Model 型号	D	d	H	h	R	自重 Weight (g)	白板吸附A4纸张数Hold A4 on white board	温度 Temperature (°C)
D12*20.2	12	9	20.2	0.2	3.5	2.6	11 pieces	<80

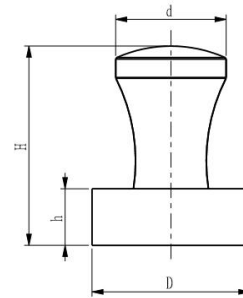


Model 型号	D	D1	d	H	h	自重 Weight (g)	白板吸附A4纸张数 Hold A4 on white board	温度 Temperature (°C)
D11*17.6	11	9	4.2	17.6	3.5	1.5	11 pieces	<80
D15*21	15	11	5	21	4	3	15 pieces	<80
D21*25	21	14	6	25	4.5	6.8	20 pieces	<80
D27.5*33	27.5	18	8	33	5	16	27 pieces	<80

PRODUCTS STRUCTURE

[Pin Magnet \(NdFeB\)](#)

Pin Magnet (NdFeB), NiCuNi coating, body lathe machining.



Model 型号	D	d	H	h	自重 Weight (g)	白板吸附A4纸 张数 Hold A4 on white board	温度 Temperat ure (°C)
D16*20	16	12	20	5.2	15.9	16 pieces	<80
D20*25	20	14	25	7.2	29.9	19 pieces	<80



Model 型号	D	qty of magnet	magnet	package	holding force	温度 Temperat ure
Dimension depends on your designing	600D/1680D or sandwich bre	customized	neodymium/ ceramic magnet	Blister/Doule blister/white box/opp bag	customized	<80

PRODUCTS STRUCTURE

[Pot magnet \(NdFeB\)](#)

Pot magnet (NdFeB), with counter bore, NiCuNi coating, body stamping machining.



型号 Model	D	D1	D2	H	拉脱力 Breakaway (Kg)	自重 Weight (g)	温度 Temperature (°C)
NA16	16	3.5	6.5	5.2	6	7	<80
NA20	20	4.5	8.6	7.2	9	15	<80
NA25	25	5.5	11	7.7	19	24	<80
NA32	32	5.5	11	7.8	32	39	<80
NA36	36	6.5	12	7.6	41	50	<80
NA42	42	6.5	12	8.8	61	77	<80
NA48	48	8.5	19	10.8	75	120	<80
NA60	60	8.5	19	15	115	243	<80
NA75	75	10.5	21	17.8	163	480	<80

Pot magnet (NdFeB)

Pot magnet (NdFeB), with bore, NiCuNi coating, body stamping machining.

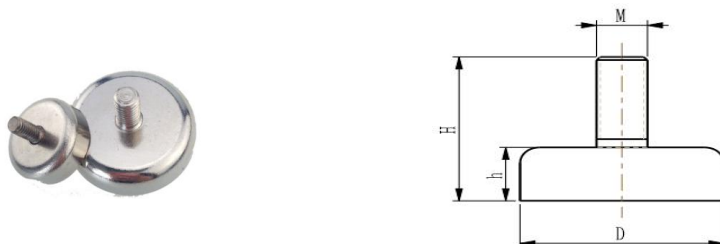


型号 Model	D	D1	D2	H	拉脱力 Breakaway (Kg)	自重 Weight (g)	温度 Temperature (°C)
NB16	16	3.5	6.5	5.2	5	7	<80
NB20	20	4.5	8	7.2	8	13	<80
NB25	25	5.5	9	7.7	18	22	<80
NB32	32	5.5	9	7.8	30	38	<80
NB36	36	6.5	11	7.6	40	48	<80
NB42	42	6.5	11	8.8	65	75	<80
NB48	48	8.5	15	10.8	72	114	<80
NB60	60	8.5	15	15	110	235	<80
NB75	75	10.5	18	17.8	155	460	<80

PRODUCTS STRUCTURE

[Pot magnet \(NdFeB\)](#)

Pot magnet (NdFeB), with external thread, NiCuNi coating, body stamping machining.



型号 Model	D	M	H	h	拉脱力 Breakaway (Kg)	自重 Weight (g)	温度 Temperature (°C)
NC16	16	4	14	5.2	8	9	<80
NC20	20	4	16	7.2	12	16	<80
NC25	25	5	17	7.7	22	26	<80
NC32	32	6	18	7.8	34	43	<80
NC36	36	6	17.6	7.6	41	54	<80
NC42	42	6	18.7	8.8	68	83	<80
NC48	48	8	24	10.8	78	130	<80
NC60	60	8	31.5	15	120	256	<80
NC75	75	10	35	17.8	178	510	<80

Pot magnet (NdFeB)

Pot magnet (NdFeB), with screwed bush, NiCuNi coating, body stamping machining.



型号 Model	D	D1	M	H	h	拉脱力 Breakaway (Kg)	自重 Weight (g)	温度 Temperature (°C)
ND16	16	6.5	4	13.5	5.2	8	9	<80
ND20	20	6.5	4	15	7.2	12	17	<80
ND25	25	7.5	5	17	7.7	22	28	<80
ND32	32	10	6	18	7.8	34	45	<80
ND36	36	10	6	18.5	7.6	41	55	<80
ND42	42	10	6	18.8	8.8	68	84	<80
ND48	48	12	8	24	10.8	78	130	<80
ND60	60	12	8	28	15	120	263	<80
ND75	75	17	10	35	17.8	178	515	<80

PRODUCTS STRUCTURE

[Hook magnet \(NdFeB\)](#)

Hook magnet (NdFeB), with hook, NiCuNi coating, body stamping machining.



型号 Model	D	D1	M	h	H	H1	拉脱力 Breakaway (Kg)	自重 Weight (g)	温度 Temperature (°C)
NE16	16	6.5	4	5.2	13.5	35.7	8	12	<80
NE20	20	6.5	4	7.2	15	37.8	12	21	<80
NE25	25	7.5	5	7.7	17	44.9	22	33	<80
NE32	32	10	6	7.8	18	47.8	34	54	<80
NE36	36	10	6	7.6	18.5	49.8	41	64	<80
NE42	42	10	6	8.8	18.8	50	68	93	<80
NE48	48	12	8	10.8	24	61	78	150	<80
NE60	60	12	8	15	28	66	120	283	<80
NE75	75	17	10	17.8	35	84	178	555	<80

[Hook magnet \(NdFeB\)](#)

Hook magnet (NdFeB), with eyelet hook, NiCuNi coating, body stamping machining.

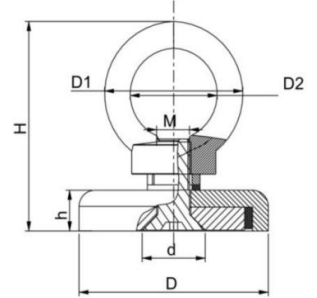


型号 Model	D	D1	M	h	H	H1	拉脱力 Breakaway (Kg)	自重 Weight (g)	温度 Temperature (°C)
NF16	16	6.5	4	5.2	13.5	35.7	8	12	<80
NF20	20	6.5	4	7.2	15	37.8	12	21	<80
NF25	25	7.5	5	7.7	17	44.9	22	33	<80
NF32	32	10	6	7.8	18	47.8	34	54	<80
NF36	36	10	6	7.6	18.5	49.8	41	64	<80
NF42	42	10	6	8.8	18.8	50	68	93	<80
NF48	48	12	8	10.8	24	61	78	150	<80
NF60	60	12	8	15	28	66	120	283	<80
NF75	75	17	10	17.8	35	84	178	555	<80

PRODUCTS STRUCTURE

[Hook magnet \(NdFeB\)](#)

Hook magnet (NdFeB), with stainless steel hook, NiCuNi coating, body stamping machining.

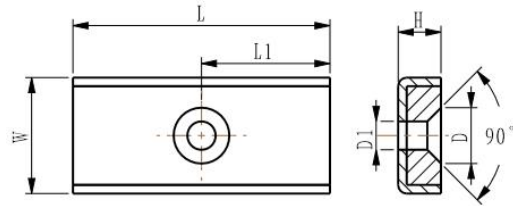


型号 Model	D	D1	D2	d	H	h	M	拉脱力 Breakaway (Kg)	自重 Weight (g)	温度 Temperature (°C)
NJ25	25	23	13.5	11	33	7.7	5	19	44	<80
NJ32	32	23	13.5	11	33.1	7.8	6	32	59	<80
NJ36	36	26.8	17	12	38.5	7.6	6	41	71	<80
NJ42	42	26.8	17	12	39.7	8.8	6	61	98	<80
NJ48	48	35.5	20.3	19	49.2	10.8	8	75	166	<80
NJ60	60	35.5	20.3	19	53.4	15	8	115	290	<80
NJ75	75	43.8	25.5	21	65.9	17.8	10	163	557	<80

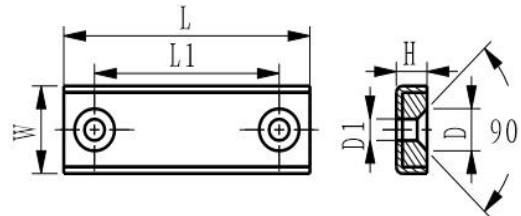
PRODUCTS STRUCTURE

[Hook magnet \(NdFeB\)](#)

Rectangular pot magnet (NdFeB), with counter bore, NiCuNi coating, body stamping machining.



型号 Model	L	L1	W	H	D1	D2	拉脱力 Breakaway (Kg)	自重 Weight (g)	温度 Temperature (°C)
NI10	10	5	13.5	5	3.3	6.5	4	4.5	<80
NI15	15	7.5	13.5	5	3.3	6.5	7	6.8	<80
NI20	20	10	13.5	5	3.3	6.5	8	9.2	<80
NI30	30	15	13.5	5	3.3	6.5	16	14	<80



型号 Model	L	L1	W	H	D1	D2	拉脱力 Breakaway (Kg)	自重 Weight (g)	温度 Temperature (°C)
NI40	40	30	13.5	5	3.3	6.5	17	18.4	<80
NI50	50	40	13.5	5	3.3	6.5	27	23.2	<80
NI60	60	50	13.5	5	3.3	6.5	30	27.9	<80
NI80	80	70	13.5	5	3.3	6.5	33	37.8	<80
NI100	100	90	13.5	5	3.3	6.5	36	46.9	<80
NI120	120	110	13.5	5	3.3	6.5	40	56.5	<80

PRODUCTS STRUCTURE

Hook magnet (NdFeB)

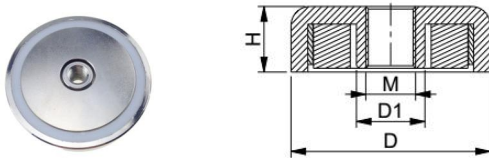
Hook magnet (NdFeB), with swivel hook, NiCuNi coating, body stamping machining.



型号 Model	D	A	B	C	H	L	W	垂直拉脱力 Vertical Breakaway (Kg)	侧面拉脱力 Side Breakaway (Kg)	自重 Weight (g)	温度 Temperature (°C)
NG25	25	20	13.5	24	15.5	55	23	18	3.5	38	<80
NG32	32	20	13.5	24	15.5	55	23	30	5.5	52	<80
NG36	36	20	13.5	24	15.1	55	23	40	6.5	65	<80
NG42	42	20	13.5	24	16.5	55	23	65	8	92	<80

Pot magnet (NdFeB)

Pot magnet (NdFeB), with internal thread-metric thread, NiCuNi coating, body stamping machining.

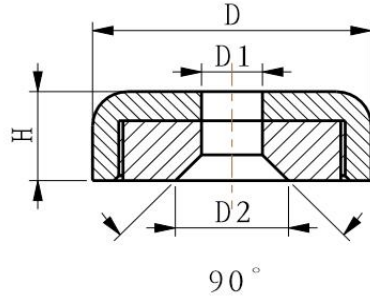


型号 Model	D	H	D1	M	拉脱力 Breakaway (Kg)	自重 Weight (g)	温度 Temperatu re (°C)
NH16	16	5.2	5.5	3	5	7.1	<80
NH20	20	7.2	7	4	8	14	<80
NH25	25	7.7	8	5	18	25	<80
NH32	32	7.8	8	5	30	44	<80
NH36	36	7.6	10	6	40	55	<80
NH42	42	8.8	10	6	65	86	<80
NH48	48	10.8	13	8	72	132	<80
NH60	60	15	13	8	110	268	<80
NH75	75	17.8	16	10	155	508	<80

PRODUCTS STRUCTURE

Pot magnet (NdFeB)

KMA with R&D of magnetic circuit, which can increase the pulling force at same Pot magnet (NdFeB), with counter bore, NiCuNi coating, body lathe machining.

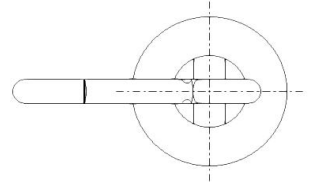
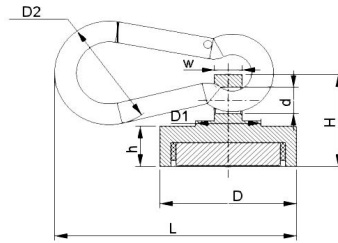


型号 Model	D	D1	D2	H	拉脱力 Breakaway (Kg)	自重 Weight (g)	温度 Temperature (°C)
KM001	10	3.5	6.5	5	1	3	<80
KM002	12	3.5	6.5	5	1.5	4	<80
KM003	14	3.5	6.5	4.5	4	5	<80
KM004	16	3.5	6.5	5.2	6	7	<80
KM005	18	4.5	8.6	6	8	10	<80
KM006	20	4.5	8.6	7.2	9	15	<80
KM007	22	4.5	8.6	6.9	15	18	<80
KM008	25	5.5	11	7.7	19	24	<80
KM009	28	5.5	11	6.4	25	28	<80
KM010	30	5.5	11	6.4	29	32	<80
KM011	32	5.5	11	7.8	32	39	<80
KM012	34	5.5	11	7.3	35	45	<80
KM013	36	6.5	12	7.6	41	50	<80
KM014	38	6.5	12	7.4	47	60	<80
KM015	40	6.5	12	7.8	52	69	<80
KM016	42	6.5	12	8.8	61	77	<80
KM017	45	6.5	12	8.7	70	90	<80
KM018	48	8.5	19	10.8	75	120	<80
KM019	50	8.5	19	10.7	89	136	<80
KM020	55	8.5	19	12	102	192	<80
KM021	60	8.5	19	15	115	243	<80
KM022	65	8.5	19	14.9	130	338	<80
KM023	70	10.5	21	16.9	148	440	<80
KM024	75	10.5	21	17.8	163	480	<80
KM025	80	10.5	21	19	192	655	<80
KM026	90	10.5	21	18	280	822	<80
KM027	120	12.5	25	18	400	1420	<80

PRODUCTS STRUCTURE

[Pot magnet \(NdFeB\)](#)

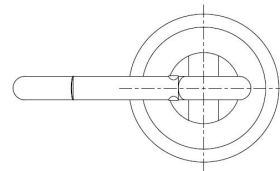
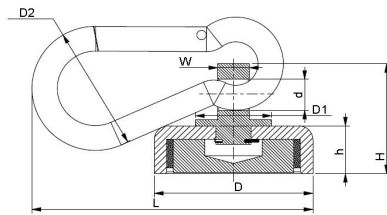
Pot magnet (NdFeB), with carabiner, NiCuNi coating, body lathe machining.



型号 Model	L	D	D1	D2	d	W	H	h	自重 Weight (g)	拉脱力 Breakaway (Kg)	温度 Temperature (°C)
L25	33	25	12	20	5	5	17.7	7.7	30.7	22	<80
L32	33	32	12	20	5	5	17.6	7.6	50.2	34	<80
L36	33	36	12	20	5	5	17.8	7.8	64.4	41	<80

[Pot magnet \(NdFeB\)](#)

Pot magnet (NdFeB), with carabiner-rotation, NiCuNi coating, body stamping machining.

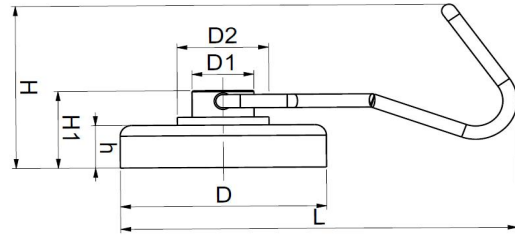


型号 Model	L	D	D1	D2	d	W	H	h	自重 Weight (g)	拉脱力 Breakaway (Kg)	温度 Temperature (°C)
L25-1	33	25	12	20	5	5	17.7	7.7	30.2	17	<80
L32-1	33	32	12	20	5	5	17.6	7.6	46.7	28	<80
L36-1	33	36	12	20	5	5	17.8	7.8	58.7	35	<80

PRODUCTS STRUCTURE

Hook magnet (ceramic magnet type)

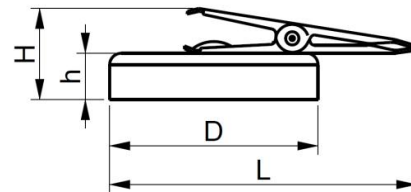
Hook magnet (Ferrite), with swivel hook, powder coating, body stamping machining.



型号 Model	L	D	D1	D2	H	H1	h	垂直拉脱力 Vertical Breakaway (Kg)	侧面拉脱力 Side Breakaway (Kg)	温度 Temperature (°C)
FG36	70	36	10.8	16	30.5	14.5	8.3	4.2	1.7	<150
FG52	78	52	10.8	16	30.5	14.5	8.3	7.4	2.5	<150

Pot magnet (Ferrite)

Pot magnet (Ferrite), with clamp, Cr coating, body stamping machining.

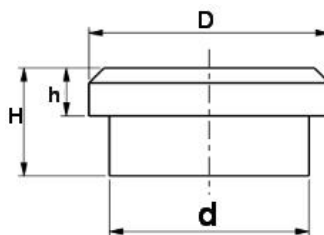


型号 Model	L	D	H	h	垂直拉脱力 Vertical Breakaway (Kg)	侧面拉脱力 Side Breakaway (Kg)	温度 Temperature (°C)
FK36	50.5	36	23.2	7.4	6.8	2	<150

PRODUCTS STRUCTURE

[Pot Magnet \(NdFeB\)](#)

Pot Magnet (NdFeB), NiCuNi coating, body lathe machining.

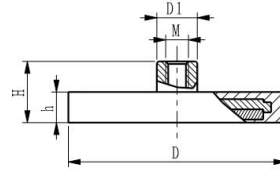
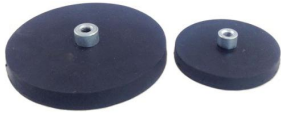


Model 型号	D	d	H	h	温度 Temperature (°C)
D10	10	8	7	3	<80
D16	16	13	7	3	<80
D18	18	16	5	2.2	<80
D22	22	18	9	3	<80
D25	25	21	9	3	<80
D30	30	27	9	3	<80

PRODUCTS STRUCTURE

Rubber Coated Pot Magnet (NdFeB)

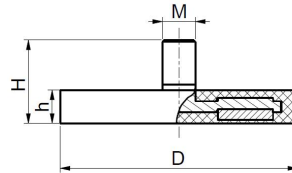
Rubber coated pot magnet (NdFeB), with screwed bush.



Model 型号	D	M	D1	h	H	拉脱力 Breakaway (Kg)	自重 Weight (g)	温度 Temperature (°C)
D22	22	4	8	6	11.5	5	12	<60
D43	43	4	8	6.2	10.7	8	33	<60
D66	66	5	10	8	14.2	20	104	<60
D88	88	8	12	8.5	15.8	42	200	<60

Rubber Coated Pot Magnet (NdFeB)

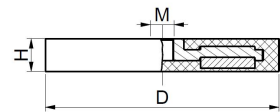
Rubber coated pot magnet (NdFeB), with external thread.



Model 型号	D	M	h	H	拉脱力 Breakaway (Kg)	自重 Weight (g)	温度 Temperature (°C)
D22	22	4	6	12.5	5	11	<60
D43	43	4	6.5	7.5	8	33	<60
D43	43	6	6.5	21	8	35	<60
D66	66	8	8	23	20	107	<60
D88	88	8	8.5	24.5	42	193	<60

Rubber Coated Pot Magnet (NdFeB)

Rubber coated pot magnet (NdFeB), with internal thread.



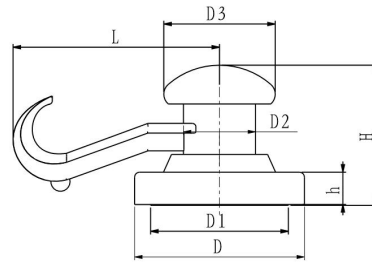
Model 型号	D	M	H	拉脱力 Breakaway (Kg)	自重 Weight (g)	温度 Temperature (°C)
D43	43	4	6	8	29	<60
D66	66	6	8	20	100	<60
D88	88	8	8.5	42	186	<60

KM notify: Thread can be customized according to customer's request

PRODUCTS STRUCTURE

Rubber Coated hook Magnet (NdFeB)

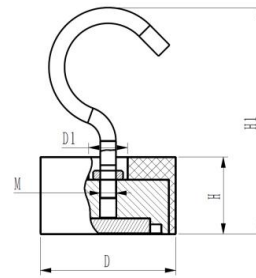
Rubber Coated hook Magnet (NdFeB), with swivel hook, plastic body.



Model 型号	L	D	D1	D2	D3	H	h	自重 Weight (g)	侧面拉脱力 Side Breakaway (Kg)	温度 Temperature (°C)
D43	65	53	43	22.5	35	43.5	10	55	2.5	<60
D66	65	68.2	66	22.5	35	51	13.75	139	10	<60

Silica gel hook Magnet (NdFeB)

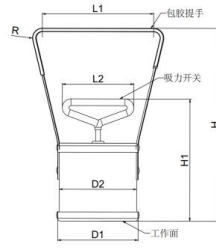
Silica gel hook magnet (NdFeB), with silica gel coating.



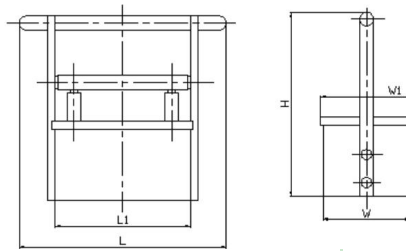
Model 型号	D	D1	M	H	H1	拉脱力 Breakaway (Kg)	自重 Weight (g)	温度 Temperature (°C)
D45	45	13	6	25.5	75	50	206	<80

PRODUCTS STRUCTURE

Magnet Catcher



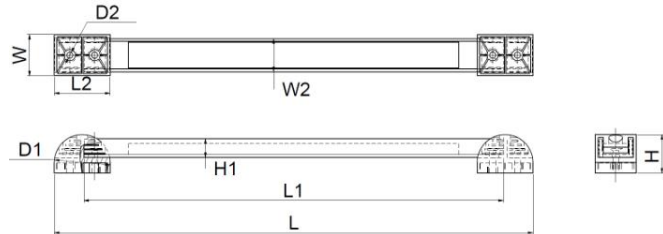
型号 Model	L1	L2	D1	D2	H	H1	R	自重 Weight (g)
D89*210	120	81	89	86	210	160	11	645



型号 Model	L	L1	W	W1	H	自重 Weight (g)
238*105*21	238	155	100	105	210	1386

Magnet Tool Holder

Magnet Tool Holder




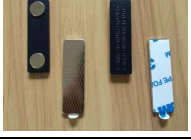








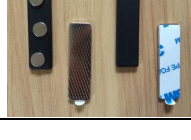




型号 Model	L	L1	L2	W	W2	H	H1	D1	D2	自重 Weight (g)
12"	350	12"	40.5	30	24	28	13.5	40.5	4.5	500
18"	500	18"	40.5	30	24	28	13.5	40.5	4.5	760
24"	650	24"	40.5	30	24	28	13.5	40.5	4.5	1020

PRODUCTS STRUCTURE

what we manufactured is magnetic solution,
rather than magnetic product

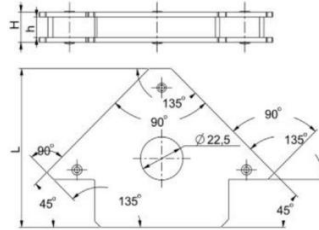
[Name Badge Magnet](#)

型号 Model	产品实物图 Product picture	物品尺寸 Item Size	材料 Material	型号 Model	产品实物图 Product picture	物品尺寸 Item Size	材料 Material	
JSTBM-001		45*13mm	ABS塑料+3片磁铁 +钢板+3M胶带	JSTBM-010		33.5*13mm	ABS塑料+2片磁铁 +钢板+3M胶带	
JSTBM-002		45*13mm	ABS塑料+2片磁铁 +钢板+3M胶带	JSTBM-011		45*13mm	金属+2片磁铁 +钢板+3M胶带	
JSTBM-003		45*13mm	ABS塑料+2片磁铁 +钢板+3M胶带	JSTBM-012		60*14mm	金属+3片磁铁 +钢板+3M胶带	
JSTBM-004		45*13mm	ABS塑料+3片磁铁 +钢板+3M胶带	JSTBM-013		D17mm	金属+1片磁铁 +钢板+3M胶带	
JSTBM-005		45*13mm	ABS塑料+3片磁铁 +钢板+3M胶带	JSTBM-014		D20mm	金属+1片磁铁 +钢板+3M胶带	
JSTBM-006		45*13mm	ABS塑料+2片磁铁 +钢板+3M胶带	JSTBM-017		46*14.5mm	ABS塑料+2片磁铁 +钢板+3M胶带	
JSTBM-007		47*15mm	ABS塑料+2片磁铁 +钢板+3M胶带	JSTBM-018		47*15mm	ABS塑料+2片磁铁 +钢板+3M胶带	
JSTBM-023		64*16mm	ABS塑料+3片磁铁 +钢板+3M胶带	JSTBM-020		45*13mm	金属+2片磁铁 +钢板+3M胶带	
JSTBM-024		45*13mm	ABS塑料+3片磁铁 +钢板+3M胶带					
			<p>KM supported customize with iron plate and stickers, logo printing and pulling force as well</p>					<p>Color and plastic materials is customized, serving with one stop solution with magnetic product.</p>

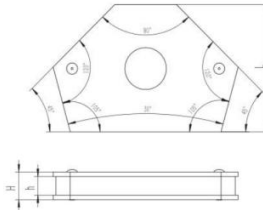
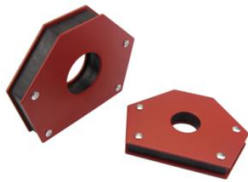
PRODUCTS STRUCTURE

Welding holder

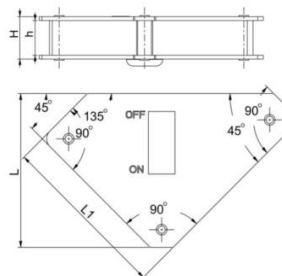
Adjustment welding magnet and on-off switch magnet is under R&D, will come to market once we fix the technical issue we are facing.



型号 Model	L	H	h	自重 Weight (g)
25磅	83	15	10.2	328
50磅	102	17	12.2	580
75磅	122	25	20.4	1014



型号 Model	L	H	h	自重 Weight (g)
30磅	83	15	10.2	328
55磅	102	17	12.2	580
80磅	122	25	20.4	1014



型号	L	L1	H	h	自重
30磅	86	95	26	21	469
55磅	118	130	33	28	983

Handling Magnets:



Processing of magnets:

The magnet's attracting and repelling forces represent a potential safety hazard. Magnets can attract and repel even at great distances - thus representing a risk of injury.

Sintered magnets are hard, brittle and, when they collide, break apart into sharp-edged pieces. Any type of collision should be avoided at all times. The powerful attractive forces of the magnet can crush one's skin, so work only when wearing suitable protective clothing!

Magnet applications:

Magnets may not be installed in potentially explosive environments because it could cause sparking.

Strong magnetic fields may affect electrical or electronic devices. This is also true of pacemakers.

We are not aware of any adverse effects to the human body as a result of exposure to magnetic fields.



Shipping of magnets:

Magnets are not classified as hazardous goods when shipped by road or sea. For air shipments, please refer to the packaging regulations for hazardous goods No. 953 of the IATA (International Air Transport Association).

When shipping via parcel services, magnets can lead to problems if not packaged properly. For example, this could affect goods (electronic devices, chip cards) in other parcels or the sorting equipment of the parcel service. The parcel could also become attached to metallic objects during transport.

Notification: KM pulling force system is tested by testing machine, unit calculated, by kgf, kg or kp, $1\text{kg}=9.8\text{ Newton}$, identified gravity of 1 kg item at northern latitude 45 degree



**Kyle Magnetics offer magnetic solutions for your specially area of application.
We are happy to share our expertise to meet your specific magnet needs.
Magnet makes our life better!**

Email address: info@kylemagnet.info

Cell : +86-182-5713-6724 (Whatsapp)

Website: www.kylemagnet.info Skype: fumingkyle

Like us on facebook or linkedin

Address: #1-2F , No.606, Qiyi Road, Hangzhou 310051,
PRC